



# Possible Forms of Industrial Co-operation and Production Localization in Russia

Implemented projects



# Moscow Region Development Corporation

## Who we are?

- Moscow Region Development Corporation is a special institute established by the Moscow Region Government to promote a favorable investment climate of the region and facilitate investment projects' implementation
- The Corporation operates as "one window", "one-stop" center for investors looking for investment opportunities in Moscow Region



## What we do?

- Attract investments into Moscow Region
- Provide information and statistics in the field of business operation activity (priority business sector)
- Facilitate the entry and eliminate administration risks
- Provide the best suitable sites and fields for investment projects implementation
- Establish and develop industrial parks, special economic zones, innovation clusters

## Partnership between Moscow Region and Korea

### Successful stories

The trade turnover between  
Moscow region and Korea in 2016 amounted \$ 454,5 mln



# Moscow Region: Overview



# 44 340

Total area, sq. km

# 19.7 mln.

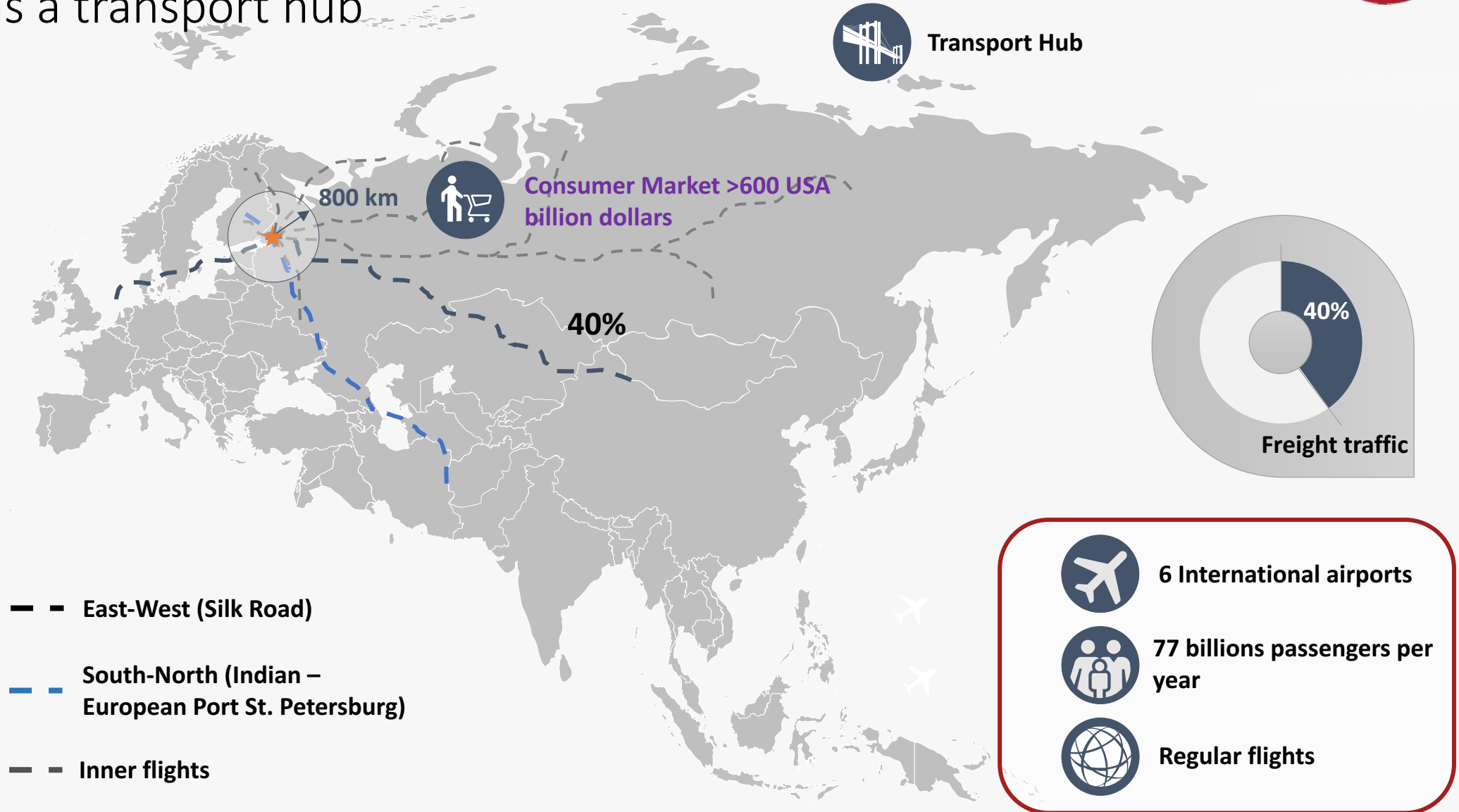
people live in Moscow agglomeration





Moscow region is located in the center of European part of Russia and serves as a transport hub

# TRANSPORT



# Wide range of support measures from the Moscow Region Government



## *Business environment*



Expand access to purchasing process in case of production localization in the region



Special investment contracts and long term agreements



«Single window» service



Export support



Assistance in case of obtaining necessary permits



*State Support*

## *Subsidies / Funding*



### Tax benefits

- ▶ Income tax – 15,5% (base 20%)
- ▶ Property tax – 0% (baseline of 2.2%)



### Interest rate subsidies

- ▶ Subsidies loan rates with amount of 0.7 %



### Subsidies R&D

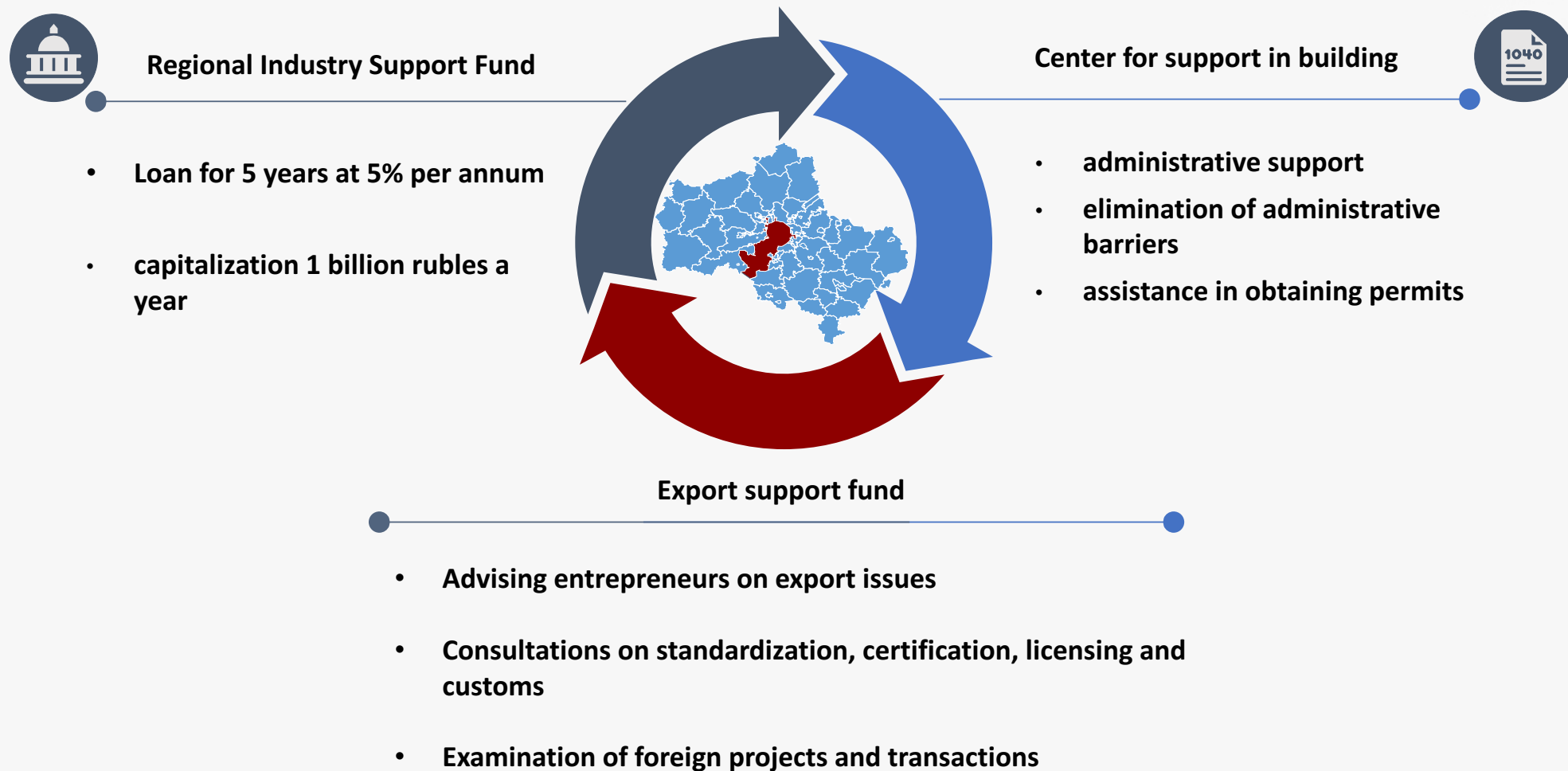
- ▶ Compensation up to 100% of R&D Cost



### Co-financing of investment project

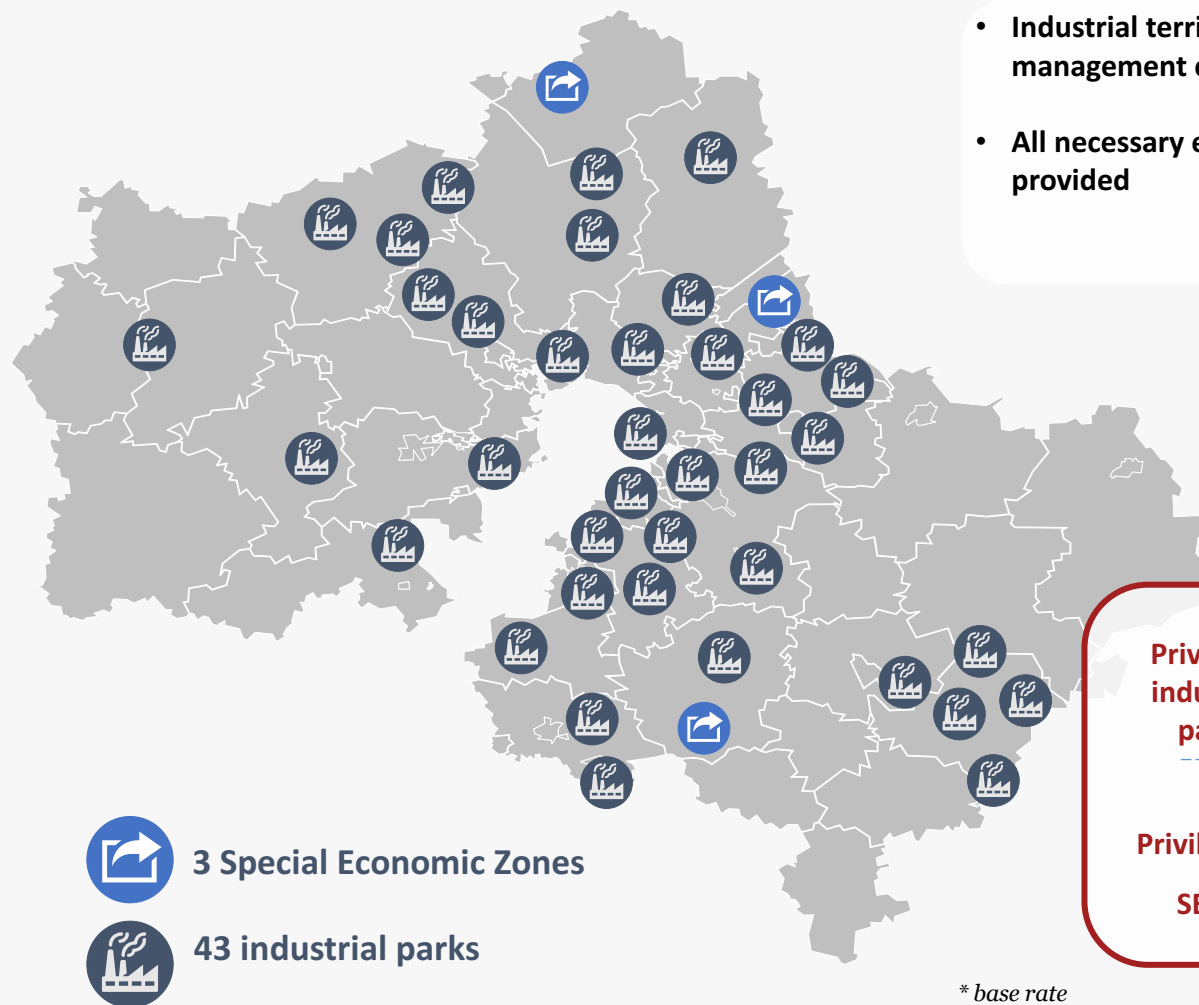
- ▶ Up to 80%

## Innovations 2016 - 2017





## The Region has ready facilities for development of industrial and engineering infrastructure



3 Special Economic Zones

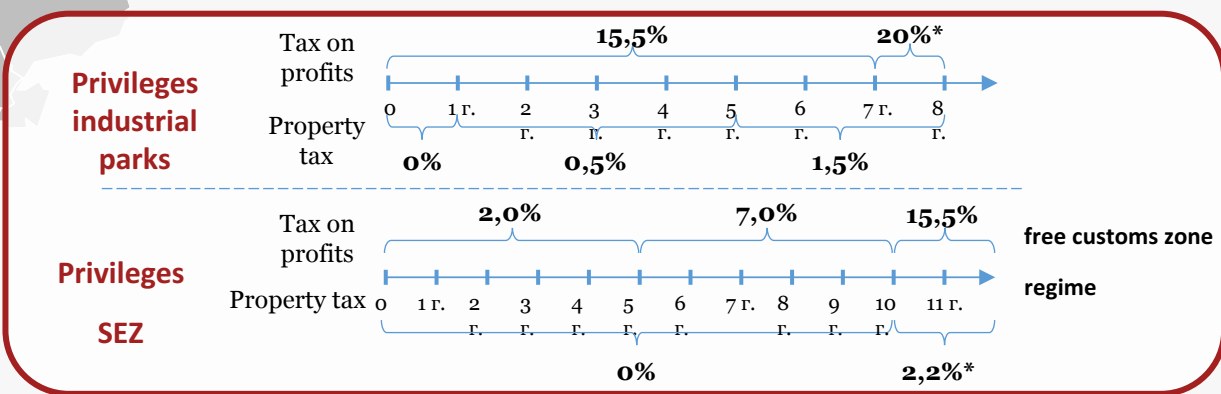


43 industrial parks

- Industrial territory under control of a professional management company
- All necessary engineering and transport infrastructure is provided

\* Special economic zones provide additional tax incentives and customs preferences

The leading industrial parks of the region are:



\* base rate

## Solnechnogorskiy Municipal District



**1 100 km<sup>2</sup>**

Total area

**138 800 people**

Population

**81 700 people**

Human Capital

**8 000 students**

8 state universities

More than **60 biggest companies** have production facilities in Solnechnogorsk district



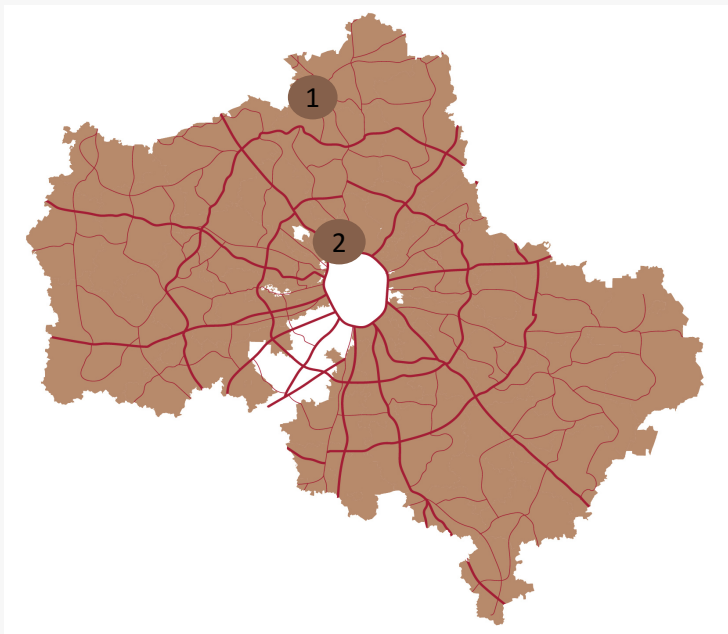
**SCHÜCO**



## Moscow Region: Special Economic Zones

# 1

**Special Economic Zone «Dubna»**  
**Type:** Technology-Innovation zone  
**Total area:** 517 ha  
**Available for investors:** 74,7 ha  
**Year of establishment:** 2005



# 2

**Special Economic Zone: «Istok»**  
**Type:** Technology-Innovation zone  
**Total area:** 60 ha  
**Year of establishment:** 2015





# Moscow Region: Special Economic Zones

DEVELOPED BY GDP QUADRAT

**STUPINO**   
Special Economic Zone

STUPINO QUADRAT: four industrial parks and a Special Economic Zone in Moscow region with a new residential area NOVOE STUPINO and an art cluster ART RIVER

1000 ha of industrial land with engineering communications and infrastructure



## TAX BENEFITS OF SEZ

TAX	STUPINO QUADRAT	In the rest of the RF
PROFIT	<b>3%</b> first 8 years <b>8%</b> next 6 years <b>15%</b> until 2064	<b>20%</b>
PROPERTY	<b>0%</b> 10 years from the property registration	up to <b>2,2%</b>
LAND	<b>0%</b> 5 years starting from the month of the title registration	up to <b>1,5%</b>
TRANSPORT	<b>0%</b> 5 years from the transport registration	up to <b>15%</b>
<b>VAT and Customs free import</b> of production lines and raw materials		



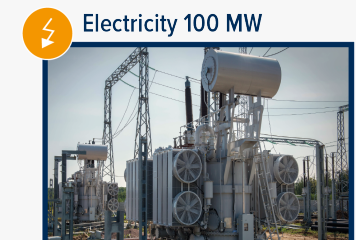
Gas 60 000 m³/h



Water/Sewage 15 000 m³/day



Railway on plot  
Direct exit to M-4



Electricity 100 MW

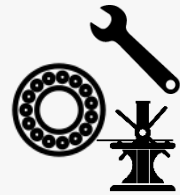


Eco-town NOVOE STUPINO

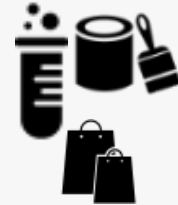


Eco-town NOVOE STUPINO

# Moscow Region: Investment prior sectors



**Industrial  
machinery,  
automotive parts  
production**



**Plastics & Chemical**



**Food processing and  
Agriculture**



**Medicine, pharmaceuticals,  
Medical equipment**



**Construction  
& building  
materials  
production**



**Automobile industry**



Brands

300 + foreign investments projects from 56 countries

Food processing and  
Agriculture

MARS

DANONE

Valio

PEPSICO

Barilla



Nestlé

GROUPE  
LACTALISCentral  
MAREVENFOODConstruction, building  
materials, Industrial  
machinery

KNAUF

JOHN DEERE

SAINT-GOBAIN

Kronospan

Danfoss

LAFARGE

ALFA  
LAVAL

GRUNDFOS

Plastics,  
ChemicalBASF  
The Chemical Company

MICHELIN

ALCOA

Reckitt  
Benckiser

Linde

Henkel

BAYER

SULZER

Medicine,  
pharmaceuticals,  
medical equipmentKimberly-Clark  
PROFESSIONAL

SERVIER

VALENTA

gsk

GEDEON RICHTER

akrikhin  
People caring for People

HARTMANN

Other Fields



Mercedes-Benz

ORIFLAME  
SWEDEN



## **Moscow Region Development Corporation**

**Timur Andreev / CEO**

**Mob.: +7 (903) 798-20-78**

**Tel.: +7 (495) 280-79-84**

**t.andreev@mosregco.ru**

**www.mosregco.ru**